

VOLUME XIV, #1

## STAR ISLAND NEWSLETTER

FALL 1988

Bringing some STAR to the Mainland

### FROM THE PRESIDENT

When Nancy Meyer called on the last day of summer to remind me that I was late in writing this letter, I wondered why the summer went so fast. Here it is time for the Fall newsletter and time to get ready for the coming board meetings and time to start preparing for next summer at Star. Well, that's life on a Star.

We owe a bushel of thanks to a number of people for their contributions this year. Lindy Anderson and her committee finished a very successful Star Fund campaign. Dick Case, Jr. and the Technical Committee oversaw the completion of the sprinkler system which was tested and accepted by the Rye Fire Department. Roland Greeley, Donna Titus and the Vaughn Committee have improved the collection in Vaughn. Ellie Smith-Sykes and her Parsonage Committee spruced up the Parsonage and Albert Doolittle almost singlehandedly finished the darkroom under Cottage D. (But, watch the steps going down!)

To Bruce Phoenix and his crew a special thank-you for the splendid work on the new deck. What a place for small meetings, reading, sunning, or just being there! Finally, thanks to all of you conferees who made this year so successful and to all the Pelicans for their cheerful contribution to a grand summer.

The office at 110 Arlington Street, Boston, MA 02116 is now unpacked and back in operation. Drop us a line with any suggestions, comments, or just to say hello.

Bob Hargrove  
PRESIDENT OF THE BOARD  
STAR ISLAND CORPORATION

### IMPORTANT NOTICE CONCERNING THE BLUE BROCHURE

Please note that due to increasing postal rates and printing costs we again plan to do a THIRD CLASS MAILING of the Star Island Blue Brochure. It will be mailed to you in time for the March 10th opening of registration IF WE HAVE YOUR CURRENT ADDRESS on our mailing list. Third class is NOT forwarded, so be sure to keep us informed of any changes of name and/or address.

## STAR ISLAND NEWSLETTER

Oscar D. Weiner, Editor  
Nancy Meyer, Conf. Admin.

50 Wagner Drive, Hamden, CT 06518  
110 Arlington St., Boston, MA 02116

---

### HE-E-R-E'S NANCY

Nancy Meyer joined the Boston office staff on September 6th. She fills the newly created Conference Administrator position.

Nancy stepped onto Star Island for the first time in 1985 to spend one summer working as a chamber person. Four years later finds her completing another open-up to close-up cycle and anticipating the 1989 season. In addition to chamber, Nancy also headed the paint crew, worked in the laundry and has worked with most other crews during her past two years as Senior Supervisor.

A 1978 graduate of State University of New York at Geneseo, Nancy holds BA's in Art and English as well as a Master's Degree in Studio Art/Painting from Long Island University-C.W. Post Center.

At C.W. Post she worked for three years as a graphic artist and managed their in-house typesetting and paste-up shop. In that capacity she worked as a consultant on such varied projects as the University newsletter, the student newspaper, alumni fund-raising campaigns and the student literary magazine. She has also worked for the Museum of Fine Arts in Boston and taught art for two years at the Glen Cove Boys Club in Glen Cove, NY.

A native of Commack, NY, she now lives in Boston. She is looking forward to the challenges and rewards of her new Star Island job.

### VAUGHN NOTES

A vase, hand painted, signed and dated by Celia Thaxter (1880), was donated to Vaughn Museum on July 4th during All Star I Family Conference by Phyllis Brookfield. The flower design on the vase is the scarlet pimpernel and the verse by Celia inscribed in her handwriting reads:

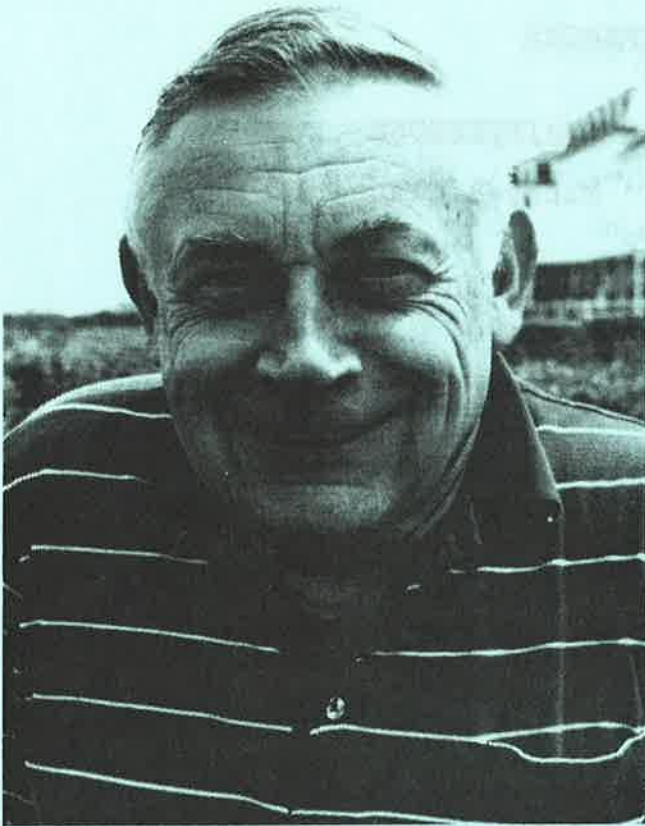
"...The last chill asters their petals fold  
and gone is the morning-glory's bell,  
But close in a loving hand I hold  
Long sprays of the scarlet pimpernel..."

A generous and much appreciated gift, the vase will be on display on the shelves in Vaughn Museum along with the sizable collection of other vases, plates, cups and pitchers, all beautifully hand painted by Celia Thaxter, (1835-94), our island poet. Donna says that the museum is attempting to locate Celia Thaxter's china existing in private or other historical collections on the mainland.

Also, Vaughn welcomes written or printed information about active Shoalers for its files at its Museum on Star. Roland Greeley chairs the Vaughn-Thaxter Advisory Committee consisting of Debbie Taylor, Marcia Hunt-Quimby, Jean Cochrun, Don Cann, Malcolm Ferguson and Fred McGill. Send any of them names, dates, places, events, facts and/or human interest stories.

--Donna Titus, Vaughn Cottage Supervisor

## STAR BOARDERS: PROFILE SERIES



In the 1950's Mel Gulbrandsen sailed out to Star to be the Recreation Director for the Religious Education Conference which led to his involvement with that conference for the next ten years.

Mel became aware of Unitarianism in 1945 when Natalie, his wife, then a Girl Scout Executive in Belmont, MA, brought home literature about the Unitarian Association. For some time they had been searching for a denomination whose religious philosophy seemed to be close to their views and thinking.

Born in Dover, NH, Mel moved to Beverly, MA, where he spent most of his growing-up years. He especially savors "sitting next to Natalie in German class in high school." He graduated from Bates College in 1942 and then from Tufts University School of Dental Medicine.

He came to Wellesley, MA in the Spring of 1946 at which time he began his practice -- and his family. He and Natalie have four daughters and one son, all of whom are married. Mel and Nat spend many hours with their children, spouses and eight grandchildren celebrating birthdays, anniversaries, etc. in Massachusetts, New Hampshire and Maine! They are a very close family.

When Mel began teaching in the Wellesley Hills Church School he became interested in group dynamics and human relations. He studied at Boston University School of Education and received his Master's Degree in Education in 1973.

Natalie and Mel were honored by the citizens of Wellesley and given a special award for their work in the community. For many years Mel was also active in the Wellesley Community Players, often wondering if he might make a change in his life and become a professional in theater.

He finds relaxation in skiing, mountain climbing and playing golf.

Mel has served on the Metropolitan District Dental Society, Tufts Dental Alumni Executive Council; was appointed to the Board of Registration in Dentistry by Gov. Dukakis (in his first term) for four years. He is a member of the Northeast Regional Board (a Board of Examiners), a testing service for candidates who wish to be licensed to practice dentistry. He has been honored by being invited to be a member of the International College of Dentists. (Con't on pg. 9)

STAR ISLAND CONFERENCES  
Summer 1989

CONFERENCES

YOUNG ADULTS CONFERENCE  
Fri., June 16 - Sun., June 18

CONFERENCE ON THE ARTS  
Sat., June 17 - Sat., June 24

NATURAL HISTORY CONFERENCE  
and  
YRUU CONFERENCE  
Sat., June 24 - Sat., July 1

ALL STAR I FAMILY CONFERENCE  
Sat., July 1 - Sat. July 8

ALL STAR II FAMILY CONFERENCE  
Sat., July 8 - Sat., July 15

RELIGIOUS EDUCATION CONFERENCE  
Sat., July 15 - Sat., July 22  
INTERNATIONAL AFFAIRS  
Sat., July 22 - Sat., July 29

INSTITUTE of RELIGION in an  
AGE of SCIENCE  
Sat., July 29 - Sat., Aug. 5

UCC I FAMILY CONFERENCE  
Sat., Aug. 5 - Sat., Aug. 12

UCC II FAMILY CONFERENCE  
Sat., Aug. 12 - Fri., Aug. 18

LAITY WEEKEND  
Fri., Aug. 18 - Sun., Aug. 20

LOAS I FAMILY CONFERENCE  
Mon., Aug. 21 - Sun., Aug. 27

LOAS II FAMILY CONFERENCE  
Sun., Aug. 27 - Sat., Sept. 2

MID-WEEK RETREAT  
Tue., Sept. 5 - Fri., Sept. 8

CHAIRPERSONS

Michael Claus

Sally Johnson

Anita Mewherter

Allison Siebecker

Ed and Jan Colby

Margy Levine and  
Jordan Young

Cindy Spring

Richard Weinert and  
Sylvia Hewett

Ward Goodenough

Don and Merrilyn Holcomb

Nancy and Bart Sides

Pricilla Wells

Tad and Judy Crawford

Bahram and Martha  
Nabatian

Charity and Richard  
Haines

REPORT FROM THE DEVELOPMENT COMMITTEE



The Star Fund Drive to finance capital projects has proved to be our most successful fund-raising effort to date. The Corporation Board thanks you all for your support.

Pledges from more than 1,000 donors provided \$525,000, of which \$370,000 has been paid. With these funds we have been able to complete a number of major capital projects, most of them safety-related. This fund helps us cover some distance.

PROJECTS UNDER STAR FUND

<u>Completed</u>	<u>In Process</u>
Installation of the sprinkler system....\$229,600	(most work to be finished summer 89)
Pelican dining room...20,000	Updates to elec. system...\$ 70,500
	Reconstruction dock end of pier.....94,000



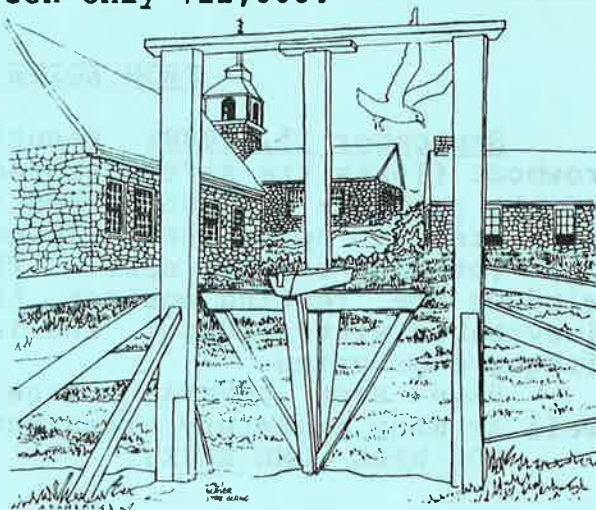
Now the Annual Maintenance Appeal resumes, calling for the contributions enabling us to repair or upgrade existing facilities. This money permits us to remain in the same place or make but a small move forward, going in the same old circles. We might call it the Maintenance Fund Turnstile.

For many years the typical response to the annual appeal has been \$30,000. In anticipation of a similar amount this year, the board had workmen go ahead during clement weather -- the only time when work can be done on Star.

As of now, however, receipts have been only \$12,000.

Necessary 1988 Maintenance included:

- Repairs.....\$ 6,000  
to smoke detector system  
(it was struck by lightning)
- Improvements.....\$ 6,000  
to walkways, porches
- Reconstruction.....\$13,000  
several fire escapes  
West wall of Oceanic  
(side next to Snack Bar)  
Three roofs
- Replacement  
washing machine.....\$ 2,500  
(for employee work clothes)
- Truck.....\$ 2,500



The old wooden gate symbolizes the Maintenance Fund Appeal. Its arms define a never-ending circle of the upkeep pivotal to the preservation of our Island's heritage. Year after year we pay the toll that allows us to continue on the pathway to the future.

To all who have made their contribution to this year's appeal, heartfelt thanks! To all who have postponed a contribution, we urge that you observe the ritual. Please send your check (with notation, "Maintenance Fund") to:

Star Island Corporation  
110 Arlington Street  
Boston, MA 02116

## REMEMBERING GINNY MCGILL

The welcoming smile at the top of the Oceanic steps that greeted new and returning Shoalers for thirty-three years is gone. Ginny McGill died on April 21, 1988 at Port Marion, FL, and a living tradition became an enduring memory.

Most Shoalers knew Ginny from their experiences on Star; she and Fred had been the first chairpersons of the All Star Family Conference; she and Fred had joined the Island staff in 1951 and continued each summer as recently as 1984; she had been the Dining Room Hostess from 1952 to 1963 (managing the Pigeon Loft as well); she then served as Conference Services Director and lastly as Island Hostess.

Fewer of us knew that Ginny Frederick was born in Dorchester, MA in 1905 with triplet brothers Frank and Paul. After having earned an A.B. degree from Radcliffe College in 1927 and an M.A. degree from Columbia University in 1931, Ginny and Fred were married on August 29, 1931.

They had a child in 1935 and from 1936 to 1943 adopted three others. Ginny's career was invariably directed at working with young people: Dean of Women at two colleges, Program Director and Personnel Director at YWCAs in New York and New Jersey, instructor of psychology and sociology, elementary school teacher. In addition, Ginny had written many inspirational articles that continue to be cited in liberal church services.

To honor her memory, friends of Ginny may wish to make a contribution in her name to the General Memorial Fund of the Star Island Corporation.

## FROM EDITH PIERSON'S JOURNAL

September 15, 1988: Beautiful, cool, crisp, clear morning. The rowboat floats are safely stored on their rocks for the winter and half of the rowboats are put to bed in their berth under the front porch. Shutters are up on the Rutledge Marine Lab after the water and animals were returned to the sea. The shutters for the Brookfield's big windows are resting against the west end of Brookfield awaiting their inevitable winter mount. The lawn remains a gorgeous green, requiring frequent grooming.

Have seen several large flocks of cormorants heading south, as well as many migratory transients, large and small, here on the Island.  
YOU WILL COME BACK!

## FROM YOUR CLOSET TO OURS

Warm thanks to all shoalers who answered the Newsletter's call for housekeeping donations. We greatly appreciate your gifts of linens, towels, blankets, pillows and dresser scarves.

Housekeeping was gifted in another way this past season through the dedicated work of our volunteer sewers.\* (\*those who sew, not those that flow.) They managed to turn a roomful of torn and discarded goods into an impressive amount of usable bedspreads, curtains and dresser scarves. For your time, talent and caring we thank you.

A SPECIAL INVITATION TO CHURCH GROUPS!!

Early fall is a lovely and quiet time on Star Island. In an effort to introduce the Island to new-comers from our church communities, the Star Island Corporation Board has made space available for small groups following our regular season. Priority is given to new UU or UCC related groups and groups which applied but were not admitted last year. The WEEKENDS which are available in 1989 are Sept. 2-4 (Labor Day), Sept. 8-10, and Sept. 15-17. (PLEASE NOTE: Labor Day weekend runs Sat.-Mon.; other weekends run Fri.-Sun.) If your church is planning a retreat, you may wish to apply for space at Star. Join us for quiet relaxation, porch-sitting and sunset-watching, in addition to your own group's activities. The chapel and some meeting rooms are available, but Island services (including the Marine Lab and Vaughn Cottage) are limited at this time of year due to reduced staffing and the start of close-up activities. Meals are buffet style, and you are asked to make your own beds, fetch your own water, etc.

Three or four slots of 50-60 spaces each will be available for church group use in 1989, subject to the following stipulations:

- (a) That each group provides a PLANNED PROGRAM for its members;
- (b) That a group of 50-60 be registered, additional applicants may be placed on a waiting list in case of cancellations;
- (c) That all persons attending register and make payment for the full weekend (each weekend consists of an approx. 48-hr. period.) Adult room and board rates are \$35.50 PER DAY, less for children, depending on age. (This rate includes 15% gratuity for Island staff.)
- (d) That a designated person act as Coordinator for your group, attending a spring orientation session at our Boston office and acting as registrar/treasurer for your group.

\*\*Please be advised that we cannot guarantee this as an annual event for any one church group. Space availability may necessitate our choosing groups by lottery some years.

February 1 is the deadline for applications; we will let you know by mid-February if your group has been accepted. To apply, complete the section below and mail it to: The Star Island Corporation, 110 Arlington Street, Boston, MA, 02116. Mark it, ATTN: SEPT. WEEKEND. Please enclose a self-addressed, stamped envelope. For more information, please call Nancy Meyer at (617) 426-7988.

THIS FORM MUST BE IN OUR OFFICE BY FEBRUARY 1.

Name of your church \_\_\_\_\_  
Will you have 50-60 people registering for the full weekend? \_\_\_\_\_  
Has your group attended a Weekend Conference on Star previously? \_\_\_\_\_  
Did you apply and fail to be admitted last year? \_\_\_\_\_  
WEEKEND REQUESTED Sept. 2-4 \_\_\_\_\_ Sept. 8-10 \_\_\_\_\_ Sept. 15-17 \_\_\_\_\_  
(Please check one, or number your preference 1-3)

COORDINATOR \_\_\_\_\_

ADDRESS \_\_\_\_\_

DAY PHONE ( ) \_\_\_\_\_ EVENING PHONE ( ) \_\_\_\_\_

## THE 1988 SEASON: GENERAL MANAGER'S PERSPECTIVE

Water seemed to be a recurrent theme during the early part of the 1988 season. First, there was too much in the wrong place when on June 17th, one day before the regular season began, a tank in the Oceanic tower ruptured and 1,500 gallons of salt water cascaded down the main stairwell into the lobby alcove. Then the cistern, which is not only the source of shower water but also serves as the sprinkler system reservoir, got to such a dangerously low level because of the draught that All Star I conferees had to forgo showers for the week. Attempts to buy water for the cistern included calls to the Coast Guard, contact with commercial fishing boats, and the use of a barge with a 4,000 gallon above-ground swimming pool mounted on the deck. Fortunately, the cistern was replenished by a substantial downpour on July 8th and none of the avenues explored for buying water came to fruition.

The water crises did not, however, overshadow a great number of very fine contributions made to Star Island by dedicated Shoalers before and during the regular season. Over Memorial Day Weekend, Tom Packard and his daughters created a lovely "talking place" by landscaping a small area along the Chapel path. At the same time, the Parsonage Advisory Committee, headed by Ellie Smith-Sykes, began refurbishing the Parsonage by refinishing the downstairs floors, as well as two beds.

Shortly after the season began, the sprinkler system was finally completed, as was enlarging and remodelling the Pelican Dining Room; specifications were drafted and permits obtained for repairing the pier, and equipment for a new telephone system was ordered. The success of the Star Fund made these four projects possible. By next June, if planning proceeds on schedule, the new telephone system should be operating and the pier project should be well underway.

Through the efforts of Bruce Phoenix and his crew, Grace Lindquist, Lindy Anderson and other contributors, a new deck was constructed between Sprague and Y.P.R.U. to the delight of many conferees who arrived after August 5th. Also, having labored for almost two years, Al Doolittle and others finished the Cottage D Dark Room, which was made possible by support from the Isles of Shoals Association (ISA). When members of the ISA observed Elaine Kennedy one week-end working with staff members to make cushions for Pelican Hall, a donation to the Pel Club was forthcoming for purchasing lamps and other items to enhance the renovated social areas.

Appreciation should also be expressed to Roger Trudeau and Dwayne Aljets for locating a "new" old truck for the Island, to Don and Amy Stauffer (LOAS I) for new stereo speakers in Brookfield, to Dick Soule, a Star Island Legend, who rebuilt the back porch of Atlantic House, and to Carolyn Brooks and Martha Tilton for re-caning a number of porch rocking chairs. Last, but not least, a thank you goes to our resident historian, Fred McGill, from whom, during the 1988 season (his 59th), I learned so much about Star Island. Breathless? You bet, but the season was fun and it's nice to be able to say "Thank You" to so many people.

--Tony Coddling



## BOOKSHOP NEWS

For over a decade, Betty Lockwood has done an outstanding job of serving the Star Island Corporation as Bookshop Manager. Those Shoalers who have been coming to Star during this time frame and who have frequented the shop are well aware of what Betty has accomplished in this period of growth. But Betty's efforts, enthusiasm and dedication -- visible to most only in the summer -- go far beyond the conference season with the mere selling of books.

We are taking a moment now in this newsletter to briefly note Betty's contribution because the time has come when Betty feels she must step down from the total responsibility of Bookshop Manager.

This means that in the near future the Bookshop Committee will be in search of a person to take over, with the onset of a transition to begin possibly as early as January, 1989. Details regarding the transition are being worked on now. But in the meantime, anyone wishing to inquire about this job or even the position of Bookshop Assistant, should write to Sherry Walworth, Bookshop Committee Chair, 76 MacArthur Road, Concord, MA, 01742 or call (508) 371-0213.

As you might guess, we have a difficult task ahead of us filling Betty's shoes. So, we ask that you in the Shoals community let us know of your interest, suggestions and referrals. And before you feel that you've missed the chance to congratulate Betty on her retirement and to personally wish her well, know that she will continue to be involved and that she will be on the island next summer when you can greet her again. In future newsbriefs we will be sharing more information with you about both bookshop developments and what lies ahead for Betty. For now, happy reading!!

From your Bookshop Committee: Harriett Swenson, Susy Mansfield, Nancy Whitman, Jane Soule, Wanda Wood and Sherry Walworth, Chair.

### ATTENTION: STAR ISLAND CORPORATION MEMBERS

The Annual Meeting of the Star Island Corporation will be held on Saturday, April 8, 1989 at the First Church in Lexington, MA. PLEASE MARK YOUR CALENDARS NOW.

### STAR BOARDERS

continued from page 3.

Mel has been involved in the Isles of Shoals Association, serving as President for three years.

For all his responsibilities and activities, Mel still has time for all members of his family and for friends; has a delicious sense of humor, and a strong sense of social justice for all peoples. He attends many of the continental Unitarian Universalist functions and meetings at which his wife Natalie is the Moderator. We are most fortunate to have Mel as a member of the Star Island Corporation Board.

--Jean Cochrun

**ATTENTION: PROSPECTIVE 1989 PELICANS!**

Application forms for employment on Star Island during the 1989 summer season are available through the Star Island office, 110 Arlington Street, Boston, MA 02116, by mid-to-late December each year, and will also be available at the Pelican Reunion gathering on December 30. The forms (including reference forms for new Pelicans) need to be returned to the General Manager by January 31. Applicants should be high school graduates.

To receive an application form, please write to the office, indicating "PEL APPLICATION REQUEST" on the envelope and enclosing a SELF-ADDRESSED STAMPED ENVELOPE. Be sure to use the return address where mail will reach you during the holiday season if you will be away from your school or usual address for any significant period of time. Thanks.

**ATTENTION: STAR ISLAND CORPORATION MEMBERS**

The Annual Meeting of the Star Island Corporation will be held on Saturday, April 8, 1989 at the First Church in Lexington, MA. PLEASE MARK YOUR CALENDAR NOW.

**STAR BOARDERS**

Continued from page 3. Hei has been involved in the field of U.S. Association serving as President for three years. For all his responsibilities and activities, Hei still has time for his interests of his family and for friends, has a delicious sense of humor, and a strong sense of social justice for all people. He attends many of the "Continental" University of Massachusetts and meetings at which his wife details to the members of the Star Island Corporation.

THIRD CLASS

Non-Profit Organization  
U.S. Postage PAID  
Boston, MA  
Permit # 58236

STAR ISLAND CORPORATION  
110 Arlington Street  
Boston, MA 02116