

NEWSLETTER  
2024

# STAR ISLAND

## WHATS ON DECK

Learn what's coming up  
in the 2024 season!

PAGE 3



In the late 1960's, Star Island was undergoing turbulent times. Much like in the rest of the United States during those years, the rules that had applied on Star Island were being seen by some as outdated, unfair and overly restrictive. Specifically, the Pelicans had their eye on a specific flash point – the length of hair that employees would be allowed to wear while working on the island.

According to Fred McGill in his book "Something Like A Star", the negotiations and agitating for change around acceptable hairstyles went on for at least four years in the late sixties and early seventies and included the support of one of the theme speakers at the time, Dr. Margaret Mead. After several rounds of discussions about change, growth and community, Star Island adapted their previous conditions, which had required the male-identified workers to have a clean-shaven face and close-cut hair. For the 1972 season, the Pelican Handbook was revised to include, among other things, the hard-won wording "Since our job is to make their [the guests'] stay enjoyable, it is essential that we maintain conventional appearance and behavior; for instance, boys may be asked to cut their hair." This was a significant shift from the previous language, and experienced as change and growth in a way that was nearly unimaginable ten years previously.

Tradition is powerful and it draws people to return to Star Island year after year. They become meaningful because we are a part of them, and they are a part of us. Many people say when they come to Star, "things never change on Star Island!" Actually, that is not true. Many traditions have evolved. A whole section of the back of the island has been converted to solar panels. If you were a Pel, you probably know well the experience of learning that beloved walls of graffiti from decades ago have been torn down to accommodate fire code projects.

By allowing room to create new traditions, we also make opportunities to instill pride in new parts of the island population. There is nothing more powerful than feeling like you are present in the moment when traditions begin, that you took part in their formation. This is what builds community, strengthens connection between humans and physical spaces.

And yet, even while change is all around, we still feel when we return to the island that somehow time stands still. Star Island has a way of accessing a familiarity within ourselves rather than providing an experience that is the same year after year. A place steeped in tradition like Star Island has a greater capacity for change than many people think. We can honor the personal history inherent in those traditions and also allow for those traditions to evolve to reflect the current people on island. This is what we mean by keeping traditions "alive."

In 2024, the idea that Star Island is a place where employee haircuts are regulated (in any way!) feels far removed from our reality. Growth in how we express ourselves has come leaps and bounds even since 1972. However, one of the lessons that this story and history can teach us is that while change and growth is essential to us individually and as a community, it is often not easy. McGill tells us that in 1970-71 there was "unprecedented tension" among the staff and at Star Island as the community wrestled with these issues. As in many circumstances, different community members had to learn from each other to grow together.



Another story about how we help each other grow is that of the Three Sisters, legend that come to us today from the Indigenous people in what is now North America. There are many versions of this story, and one of them is from the Iroquois.

The Iroquois legend tells of three sisters who sprouted from the body of Sky Woman's daughter, granting the gift of agriculture to the tribes. The sisters were all different in appearance and in personality. They lived together and helped each other grow and be strong.

Corn is the oldest sister. She stands tall in the center and provides a structure for the beans to climb, eliminating the need for poles. Squash is the second sister. She grows over the mound, protecting her sisters from weeds and shades the soil from the sun with her leaves, keeping it cool and moist. Beans is the third sister. Beans climb through squash and up the corn stalk to bind all together as she reaches for the sun.

The story of the three sisters is one that has been lived out by the Indigenous people through their plantings over the centuries. They taught through their stories that each of these plants grows better when they work together, as each has different skills and strengths. Through working together, we are able to grow and support each other in a way that none of us would be able to sustain on our own.

One of the wonderful things about growth is that there are so many ways we can engage with it – we can grow personally, spiritually, emotionally, structurally, and as a community. Together, we can support each other in growth, and in connection as a community of Star Islanders – growing in our relationship with the island, growing in our conference, sharing Star with people who have never been to the island before.

This summer, we are asking everyone to engage with the idea of growth; if you have been coming to Star Island for fifty years or if today is the very first time you have heard of Star. Think about how you might be ready to grow and what that means for you. Recognize and acknowledge when changes are difficult and uncomfortable for yourself and for other members of our community. Think about how you can support others in their growth, as the three sisters do, and the ways that your gifts can engage with and include the gifts of the whole community.



Whether you are brand new to Star Island or a returning Shoaler, here's a little reminder of the many things that make the Star experience so unique and special. Everyone is encouraged to take part in as much (or as little!) as you want while on the island.

While some folks like to stay busy and do all the things, others are blissfully content spending their days relaxing in a rocking chair reading on the Front Porch. *There is something for everyone on Star!*

# On Island Experiences!



## Island Tours

These weekly on island tours are awesome! Lead by members of the Star Island staff, take a deep dive into our amazing environmental initiatives, get a behind-the-scenes look at what it takes to run the island, and learn about the extensive history of the people of the Isles of Shoals and Star's unique natural resources.

**Some of our tours include:** Behind the Scenes, Underworld Tour, Island Systems and Sustainability Tour, Historical Tour of Star Island, Ghosts and Graveyards Tour, Low Tide Walk, Bird Walk, Botany Walk, and Geology Walk. Information on these tours can be found on the Chalkboards located on the Front Porch and at the Front Desk!

**Boat Trips, Kayaks, Rowboats, and Swimming...we're on an island after all!**

Head over to Appledore Island and stroll around Celia's Garden, tour the Shoals Marine Lab, and then cruise around Duck Island to check out all the seals! Experience a spectacular sunset while cruising around the Isles of Shoals. Grab a Kayak or Rowboat and venture out on Gosport Harbor.

**Looking to throw on your swimsuit and jump into the Atlantic? Nice!** Before breakfast, take part in an age-old early morning tradition: Polar Bear Dipping! Anyone is welcome to jump in the water along the pier between the dock and the shore - but only when lifeguards are on duty, which is generally 9:00 AM to 5:00 PM.

## Get in the Water!



## Special Experiences

There is a lot about Star that is special. Here's just a few experiences that folks say are their go-to while on island!

**Candlelight Chapel is a cherished tradition.** Carry a candle lantern up path up to the chapel. Inside, lanterns are hung from the walls, providing the only source of light. **Pelican Shows are a blast!** This weekly variety show put on by Pels (our seasonal workers) features musical acts, skits, and ends in a performance by the Pelican Chorus. **Visits to the Rutledge Marine Lab delight kiddos and adults alike!** Our touch tank is brimming with sea stars, crabs, mussels, sea anemones, barnacles, and more! **Stop by the Vaughn Cottage Museum** to view exhibits displaying artifacts such as Celia Thaxter's pottery, historical photographs, maps and books.

If you are new to Star, here's some info on where and when meals take place.

Let's start with the all important morning coffee/tea that can be found in the Dining Hall every day 6:00-8:00 AM. Daily mealtimes are: Breakfast 8:00 AM, Lunch 12:30 PM, Dinner 6:30 PM. Meals are served buffet style. Daily vegetarian and gluten-free options are available! Lobster dinner is served once a week for an additional fee. Lobster tickets must be purchased in advance at the Front Desk.

**Looking to mix it up?** Check out the food and beverage options available at the **Snack Bar** (inside next to the Dining Hall) and the **Gosport Grill** (outside down by the pier). Check out the chalkboards for up-to-date hours!

## Food and Beverages



## Helpful Resources

Need an answer to a question or help in any way? The Front Desk, Chalkboards, and Writing Desk are your friends!

**Keep an eye on the Chalkboards along the wall of Front Porch and inside the Lobby!** This is where you will find up-to-date details on activities on the island (like days, times and locations) as well as any on the fly changes that may occur. **The Writing Desk** (in the Lobby) is where you can reserve a shower time and where other sign up sheets can be found. **Consider the Front Desk your go-to for EVERYTHING!** Housekeeping requests, dining information, boat times, island tours, medical emergencies...you name it. The Front Desk is your **24-hour resource** for anything you might need while on Star Island. *YES, anytime day or night!*





# WHAT'S ON DECK

## Art Barn and Cottage C

This year, our capital project plans include restoration of these two important buildings, including a focus on siding, sheathing, trim, windows, and more. This is a continuation of our "whole building"/long-term preservation approach. Cottage C was constructed in 1856 as a home for the Robinson family – fishermen at the Isles of Shoals. It is now home to seven cozy guest rooms. Historically, the Art Barn served as an ice house, storing cut ice from the adjacent ponds for the hotels. The use of ice was discontinued when electricity was brought to the island in the early 1900s, and the Ice House was converted to a generator room, with power lines running all the way to the Oceanic Hotel. When the present Power House was built in the 1960s, the building became what it is now – an important space to support Shoaler art and creativity.

## Underworld Renovations

The "Underworld", located beneath the first floor of the Oceanic Hotel, houses the staff dining and social areas, offices, conference storage, the laundry and other work spaces. This fall, as part of our multi-year renovation, we will be relocating our island laundry operations, and we anticipate beginning extensive renovations to Pel Hall, the dining room for our beloved Pelicans.

## Strategic Plan, 2024-2028

Our new strategic plan will guide the work of Star Island Corporation from now through 2028. The plan focuses on four goals: Beloved Community, Environment, Financial Stewardship and Governance. See page 5 to learn more.

## Breakwater Project

Back for another year! This is a US Army Corps of Engineers project, which only happens every 50+ years. The crew, which resided on Star last summer in RVs has completed work on the breakwater between Star and Cedar Islands. In 2024 they will be working on the breakwaters between Cedar and Smuttynose Islands and between Smuttynose and Malaga Islands. This project helps to protect Gosport Harbor and the Isles of Shoals. 3

# Labyrinth

Tying in with our Theme of Growth, we are planning on constructing a new, more substantial labyrinth on the island. This will be a community project, and there will be ways for guests and employees to participate in its construction. A labyrinth is an ancient symbol with a rich and cross-cultural history, and it represents a winding path or journey. Once completed, it will serve as another space on the island for meditation, reflection, and spiritual exploration.



# Oceanic Grand Staircase

It is time to repair this gateway to the Oceanic Hotel, which receives thousands of visitors each year. These steps are home to many happy memories – the first ascent to the front porch upon arrival, gathering with friends for a conference photo, watching a softball game, huddling to receive instructions for youth activities – and so many stories yet to come. This staircase is being completely refurbished, with meticulous attention being spent (as always) on both the historical and safety related components of the project.



# Governance Review

We are reviewing our current processes against the backdrop of best practices in nonprofit governance. As a learning and growing organization, we are always open to positive change, and we are committed to assessing the systems and processes we have created over the years to ensure that they are effective, inclusive, and position us to respond to both opportunities and challenges. A Governance Task Force was formed to do this work and has submitted recommendations to the board of directors...stay tuned for more!

# Students on Star

We are excited to be relaunching and growing our cross-curricular educational program for elementary, middle, and high school classes and recreational groups – our Students on Star Program. This program involves a collaborative approach, whereby Star Island partners with schools and groups to offer immersive educational programming on Star on topics including history, sustainability, natural history, and more.

# Storm Repairs

In January, an impressive storm with exceptional winds and surge battered much of the region, including the Isles of Shoals. While thankfully, the buildings were spared of any major impacts, damage to the pier railing was significant. There was also significant damage to sections of the perimeter road along Gosport Harbor. Cleanup and repairs will happen before the season begins.

# Star Island **2024-28** *strategic plan*

Over the next four years, this plan will be our roadmap, providing strategic direction for us to advance the work of our mission.



## Beloved Community

Support an invitational culture within and beyond Star Island, engaging in radical hospitality to co-create an actively welcoming community while engaging the ideals of Beloved Community.



Beloved Community is a theological concept that was popularized by the Rev. Dr. Martin Luther King Jr. based on the dream that society is fully integrated, and that our world transcends boundaries and barriers, embracing all people.

Radical hospitality moves beyond easy connections to seek out people who might be beyond their typical reach, and extended community in multiple and diverse ways. It means sending a message beyond, "you are welcome to join us." asking, "how can we be with you?"

## Environment

Explore what it means to live in collaboration with the changing environment as a way to inspire adaptation in the Seacoast Region and beyond.



Read more about the Green Gosport Initiative and our plans to develop a climate adaptation plan on page 7



## Financial Stewardship

Maintain a path to sustained economic vitality by identifying and obtaining the necessary financial resources to ensure our long-term success and support a thriving community.



A Governance Task Force is evaluating current processes against best practices to make recommendations, ensuring Star's systems and policies are inclusive and adaptable to challenges, to help foster a thriving organization that promotes collaboration, fiscal prudence, and mission alignment.

Star Island is a nonprofit organization! Did you know that what we earn in room and board only covers only 2/3rds of what it costs to run the island each year? Your donations to The Annual Fund are an essential part of what makes Star Island possible. See page 8 to learn more about all our fundraising efforts.

## Governance

Ensure that Star Island Corporation is a highly functioning nonprofit organization which operates equitably, effectively, ethically, and according to its mission, vision, and values.



View the detailed version of the strategic plan, including specific objectives for achieving these goals

# THE ANNUAL FUND

Please join us in stewarding this precious island together!

Did you know that room and board only covers about 2/3rds of what it costs to run the island each year?

Your donations to **The Annual Fund** are essential to filling that gap and affect every aspect of the Star Island experience. Donations directly support our Financial Aid Program, the upkeep of our historic buildings, Pelcian wages, Beloved Community and Green Gosport Initiatives, and so much more!

It's your generous support that makes Star Island possible!

Thank you!

## Ways to donate:

### ONLINE ANYTIME:

[starisland.org/donate](http://starisland.org/donate)

### WHILE ON ISLAND:

At the Front Desk!

Reach out to your conference's Annual Fund Representative.

Email: Laurie Contrino  
Development Manager at  
[lcontrino@starisland.org](mailto:lcontrino@starisland.org)

Photo credit: Sean D. Elliot

To learn more about charitable giving to our 501(c)(3) nonprofit organization, like joining our planned giving program, **The Legacy Society**; donating to our endowment, **The Star Island Permanent Trust**; sponsorship of our fundraising events; and more: please contact Development Manager, Laurie Contrino, at [lcontrino@starisland.org](mailto:lcontrino@starisland.org).



# Building our Community

Embracing this year's **theme of growth**, we invite everybody to seek out opportunities to introduce Star Island to more new people.

**Why?** Star Island serves as an important place for people in many ways. For some, Star represents hope—a community where acceptance thrives, where diverse perspectives come together, and where sustainability isn't just talked about but lived. It's a space where some people find the freedom and courage to be their most authentic selves and find the inspiration to make a difference in their own lives, the lives of others, and in their off-island communities.



**Why else?** New people strengthen our community, bring new perspectives and diversity in many forms, and help with the long-term sustainability of Star and the conferences. As we embrace growth, we recognize the importance of welcoming new people into the Star Island experience. Each new person adds to the tapestry of our community, weaving in diversity, unique talents, and fresh perspectives.

**How can you help to grow Star Island?** Think about who in your life might benefit from what Star has to offer. Consider who you know that might be able to contribute something to our community. Bring some friends or a family member with you to your conference this summer. Or suggest a conference for them that you don't attend. Maybe you know someone who would enjoy a family conference, or perhaps one of the offerings toward the end of the season: yoga, quilting, chamber music, choral singing, meditation, or one of the many other programs that happen on the island. Perhaps you know someone who would like to work or volunteer for Star Island – these opportunities can be shared as well! Spread the word, extend the invitation, and let us all work together to ensure that Star Island continues to be a welcoming haven for all. And thank you!



# Not sure what conference to recommend? Here are a few suggestions:

**A multigenerational family looking for a vacation with a purpose:**

-Building Bridges

July 14 - July 21

-Star Gathering 1 or 2

July 28 - August 4 or

August 4 - August 11

-Life on a Star 2

August 18 - August 25

**A religious professional:**

-Faith Development Week

July 14 - July 21

-Soul Works

August 4 - August 8

**Someone with an interest in history:**

-New England Heritage

August 25 - August 28 or August 31

-ISHRA

June 16 - June 20 or

September 6 - September 8 or 9

**Someone looking to learn a new craft or practice an existing talent:**

-Watercolor Intensive

August 25 - August 30

-Watercolor Adventure

September 2 - September 6

-Rug Hooking

September 9 - 13

-Writers in the Round

September 6 - September 9

If you bring some new people with you this year, please be sure to check out our 10/10 Bring a Friend program on our website ([starisland.org/discounts](http://starisland.org/discounts)).

We are offering 10% off room and board for each new person you bring, and they get 10% off too.

# 10 years and 10 miles out:

## an environmental update

In many ways, to many different people, Star Island is a special place. As a small island with limited resources and no bridges or underwater utilities connecting the island to the mainland, Star also offers a special opportunity to put sustainable concepts into practice.

For centuries, living in collaboration with the environment has been integral to living on Star Island. Conservation just makes sense in a community with off-grid power demands, limited fresh water, and few waste disposal options. In recent decades, Star has made intentional conservation efforts, beginning with launching the Green Gosport Initiative. This is Star Island's green initiative, which acts as a vehicle for island sustainability projects, focuses on educating visitors about environmentalism on and off the island, and models this approach for other communities. Named after the fishing village once found on Star Island, the Green Gosport Initiative draws upon a long tradition of conservation and creative resource use at the Isles of Shoals. This ongoing initiative is a reference to and embodiment of the endurance, resilience, and creative spirit of island communities who have called Star Island home.

In the 10th year anniversary of Star Island's solar array installation, we look back and celebrate successes ---both small and large--- while looking forward to implementing new sustainability projects as the island meets the challenges of an everchanging world:



**Annually, 60% of Star Island's energy demand is met by solar power produced by the island's solar array.**

- Star Island aims to shift this closer to 100%, both through re-evaluating and optimizing how the island uses energy, and through expanding the existing solar array.
- Simple things like changing out lightbulbs for LEDs and charging devices during the day when it is sunny, along with bigger changes like rethinking water use and how fresh water is produced will help the island reach this goal.



Star Island is one of the **largest** compost facilities in the state, and we look forward to serving as a model to others as the state of New Hampshire enacts a food waste ban beginning in 2025.

Feeding people first by donating unused food and products to local food pantries like Gather.

Star composts all food scraps and plate scrapings (including meat and dairy!) on-island, along with paper towels, disposable plates/cups/cutlery/to-go containers, and corrugated cardboard (shredded first).

Star Island strives to follow the EPA's wasted food scale to reduce the environmental impacts of wasted food.

Preventing food waste by carefully planning menus, rotating food stock, and using leftovers.

Feeding animals: **Pels are interested in bringing chickens back to Star Island this summer!** The chickens would eat kitchen food scraps along with breakfast leftovers like oatmeal.

### Compost!

The soil amendment produced by the island's compost system enriches gardens around the island.

## Star Island has launched two separate task forces in response to environmental changes we are experiencing and anticipating on Star Island:

- Landscape Stewardship Task Force is focused on ecological and environmental issues including but not limited to: resiliency related to vegetation fire safety; resiliency related to flooding; native plants/plant communities; plants and plant communities that support pollinators and migratory birds; aesthetics; invasive plant management.
- Climate Change Adaptation Task Force is focused on understanding the predicted and likely effects of climate change and developing an action plan to identify and mitigate the risk of these climate changes to Star Island and island facilities, mainland facilities, and overall, SIC operations.



Kieran Binney	Head Chef	Bill Knox	Island Registrar
Brenda Bladen	First Aid Station Support	Dan Linskey	Head Carpenter
Kate Brady	Office Manager	Mark MacDonald	Logistics Coordinator
Nick Bresinsky	Head Painter	Justina Maji	Conference Center Director
Alexandra Buinicky	Shoreside Laborer & Logistics Support	Rev. Christina McKnight	Island Minister/ Beloved Community Project Manager
John Bynum	Island Manager & Food Service Manager	Sabina Michaud	Assistant Island Engineer/Administrator
Laurie Contrino	Development Manager	Chris Rosario	Island Engineer
Tim Dullea	IT Manager	Kristen Simard	Environmental & Facilities Operations Manager
Kelly Dwyer	Accounting Coordinator	Joe Watts	Chief Executive Officer
Dilly Etter	Food Service Coordinator	Glenn Young	Island Technician
Lindsey Greene	Administrative Assistant		
Chelsea Haskell	Communications & Program Manager		
Heather Jacob	Island Nurse		
Ruth James	First Aid Station Director		
Candi Kane	Waterfront Manager & Boat Captain		
Don Kilis	Island Technician		

# 2024 BOARD OF DIRECTORS



Joni Abbadessa Treasurer

Kyle Belmont

Cary Cuiccio President SIUCC

Rev. Dr. Leon Dunkley

Rev. Debbie Duval President

Liz Erickson

Lucia Green-Weiskel

Tom Kennedy Vice President

Caroline Quijada

April Rosario

Topher Soltys

Ali Walton President ISAUU

Arlyn Weeks Clerk

Work with us in August  
and September



Perfect if you are on a gap year, between jobs, retired or looking for adventure!

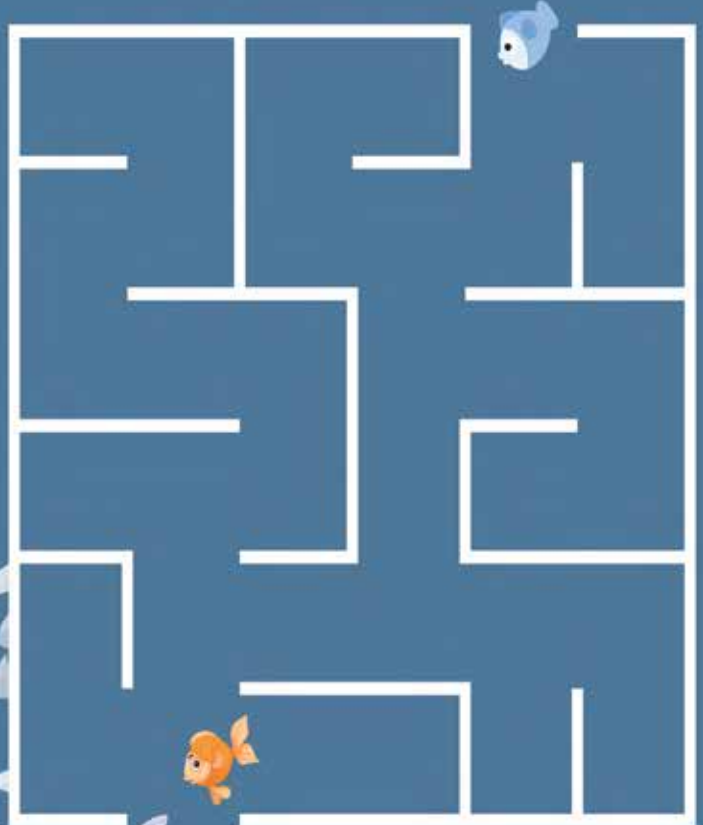
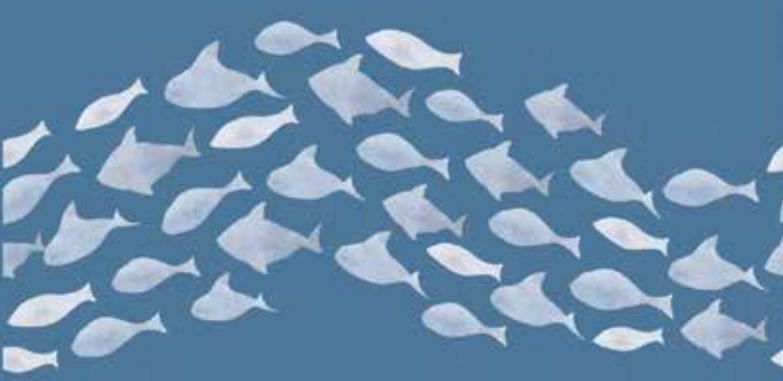
We're proud to take care  
of your Spirit's Home!

# Kids Corner

Draw your favorite Star Island memory:

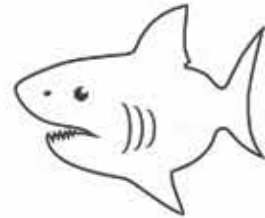


Help the fish get  
back to it's friends!



# OCEAN WORDS

CAN YOU NAME THEM ALL?





# Passages

## *Welcome to the World*



Morwen Rivka Houk Berry  
Milo Fogg  
Beckett David Jowaisas  
Ophelia James Lipton  
Maxwell Ezra McCallum  
Elliott Logan Parsons  
Willey Dean Reed  
Elwyn Williams Rempe  
Theo Yanis Tourloukis  
Poppy Wilson

## *Congratulations & Best Wishes*



Cameron Duval & Emma Chinman  
Isaac Fitzgerald & Kelly Farber  
Emily Jones & Greg Rempe  
Nina Peluso & Harry Falconer  
April Weintraub & Ryan Megathlin

## *In Loving Memory*



Bill Anderle  
Rev. Tim Benson  
Henrik Bresinsky  
George Collins  
"Tad" H. C. Crawford, III  
Isabel Denham  
Keith Dupree  
Duncan Duval  
Nancy Emerson  
Susan Fitzgerald  
Felice Fullam  
Alan Finkelstein  
Chuck Gallant  
Carl Gettleman  
Carl Hallman  
Philip Hefner  
Gail Henry  
Rev. Olivia Holmes  
Pat Hurzeler  
Susan Jaeger  
Viola Johnston  
Mary Keeler Rowe  
Dr. John M. Kingsbury  
Karen Mathiasen  
James Mears  
Chris Nelson  
Anita Nygren  
Jim Prochaska  
Stephen Roberts  
Eithne Ross  
Anthony Spisto  
Josh Stedman  
Donna Titus  
Sally Wool



# Star Island Memorials

## Memorial Book

Create a page honoring your loved one to be inserted in the Star Island Memorial Book displayed in the Oceanic Hotel Lobby.



## Memorial Stones

Stones are engraved with the name of your loved one and placed in the Memorial Courtyard on the island.

## Rocking Chair Memorial Plaques

Plaques are engraved with your personal message and attached to a Rocking Chair located on the Front Porch.



For more information on memorials, please visit:

[starisland.org/donate/memorials](http://starisland.org/donate/memorials)

BY THE NUMBERS  
2023

228

Personal retreaters

164

Pelican Guests

4

Tons of cardboard composted

133

Pels on Island

8%

Surpassed the **Annual Fund** goal

27

Alex & Brad's winters as island caretakers

770

New conferees/New Shoalers!

550

Pounds of food donated to Gather

\$80k

In Financial Aid offered by Star Island

2

Tons of paper towels composted

30

Tons of food waste

72,200

Gallons of water delivered by the Lighton

3

Tons of compostable cups/utensils

17,938

Bed nights

3,719

Conferees

3

Dogs living on the island

280

Legacy Society Members

8

Combinations of Pelican siblings working on island

439

Corporation members

349,756

Gallons of water made by reverse osmosis

1,193

Individual **Annual Fund** donors

# LUGGAGE LINE

*the secret is to shift the bags along as quickly as possible  
never take the full weight, and we never stay still  
we are always moving and shaking  
sunburned and suitcase-bruised  
sprinting down the back stairs of the summer hotel  
we somehow keep running*

*the secret is to let the tide go out and then jump feet-first  
not looking down to see how far we have to fall  
because we are arms outstretched to catch each other  
staggering sometimes under the weight of long days and longer nights  
reaching our hands up to meet the milky way*

*we are breaking bones in june and hearts in july and  
screaming ourselves hoarse on the pier in august  
as the first of us start to leave  
trying to hold on to all this is enough to crush someone  
we are moving the luggage, not catching it  
but we try to keep what we can while we can:*

*handfuls of polaroids, matching tattoos  
friendship bracelets that fade in the off-season until  
the colors only exist in our memory  
six tons off the boat in half an hour and we call it halfway  
instead of job done because we know  
this never really ends*

*because the secret is that this line is a tether  
one pair of hands to another, one season to the next, stretching down  
a hundred years of names scrawled on every surface we can find  
the weight of this could crush us, so we don't carry it alone  
we take each summer like a sack of flour to the chest  
letting it knock the wind from us  
letting it go  
looking down the line at what's coming*

KIERAN BINNEY



# Star Island

Morton-Benedict House  
30 Middle Street  
Portsmouth, NH 03801

(603) 430-6272  
[www.starisland.org](http://www.starisland.org)

*Thank you to the photographers and  
writers who contributed to this issue.*